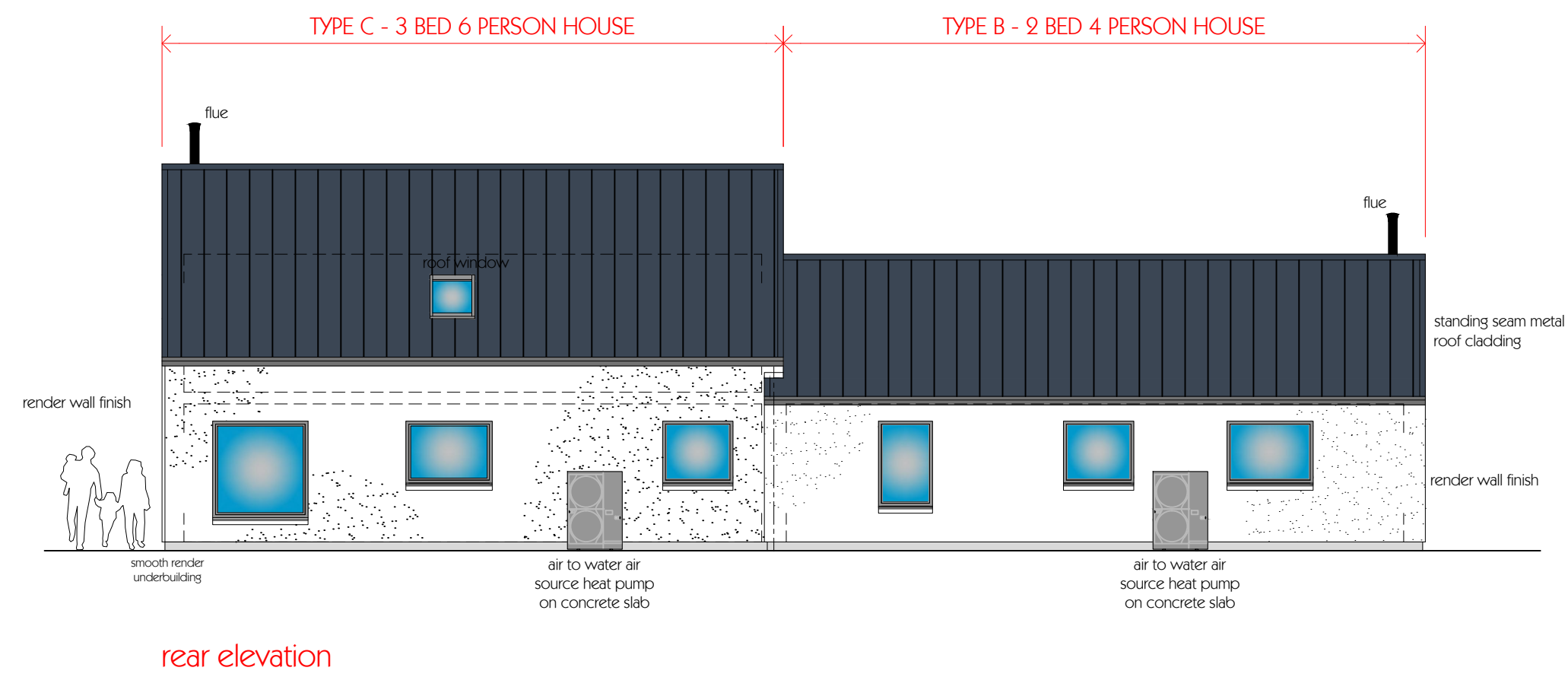
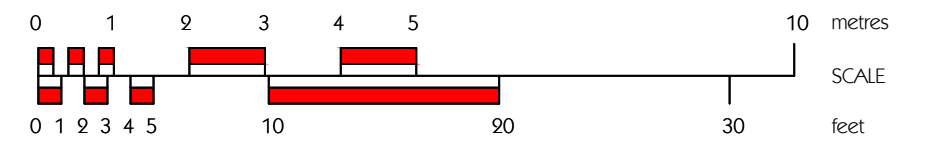
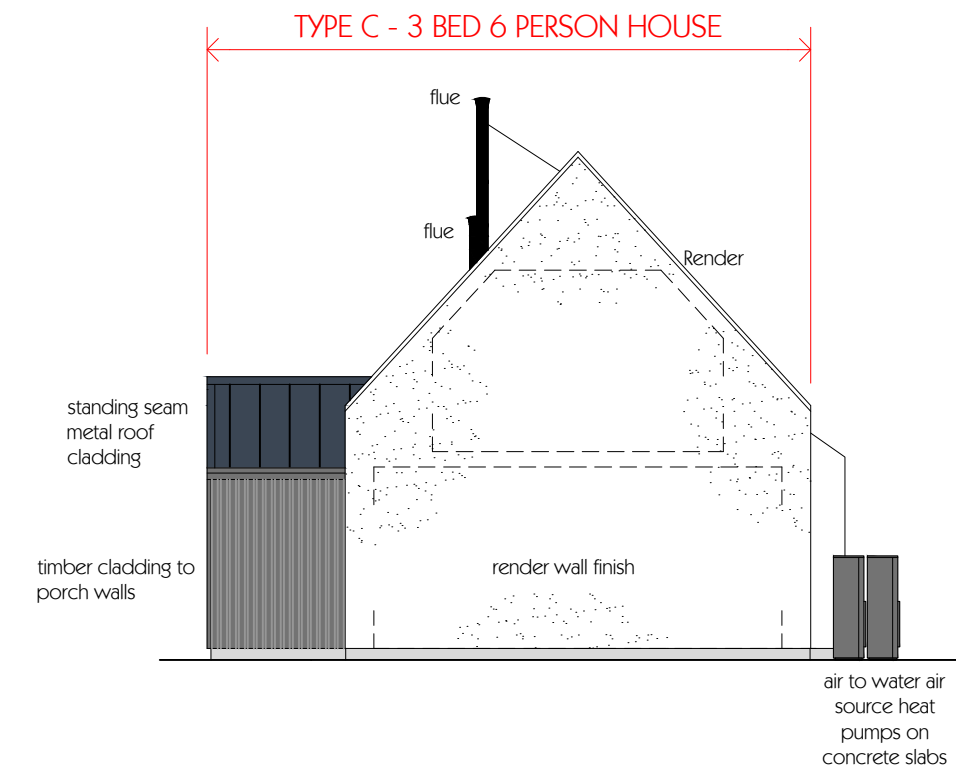


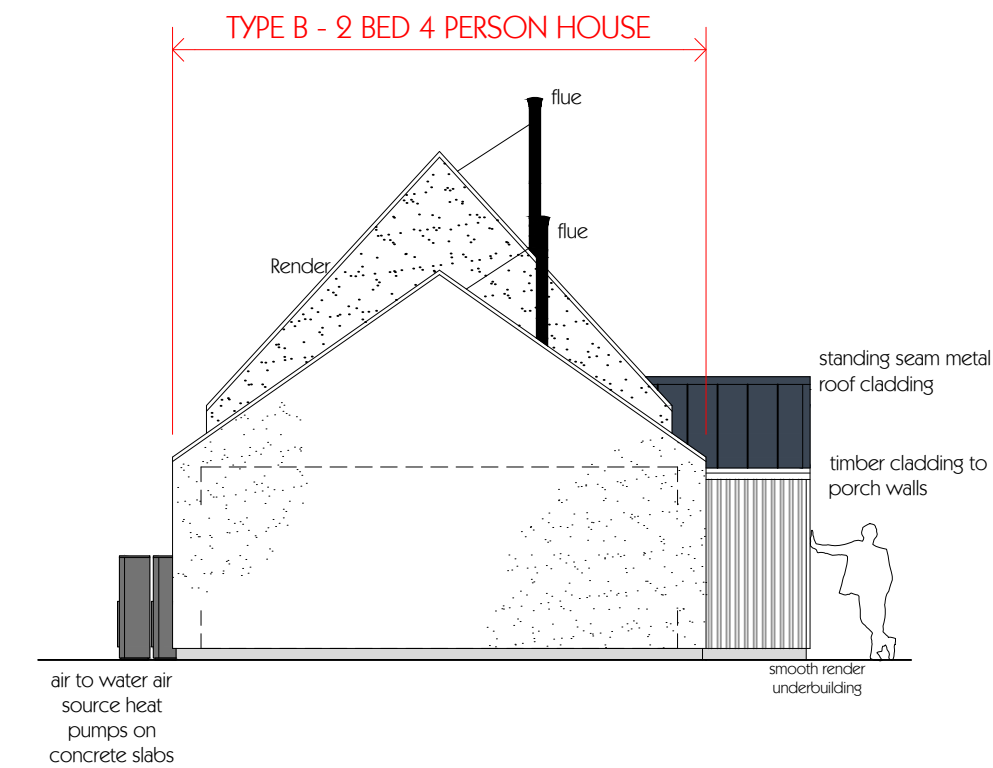
# proposed housing ● Scalasaig ● Isle of Colonsay



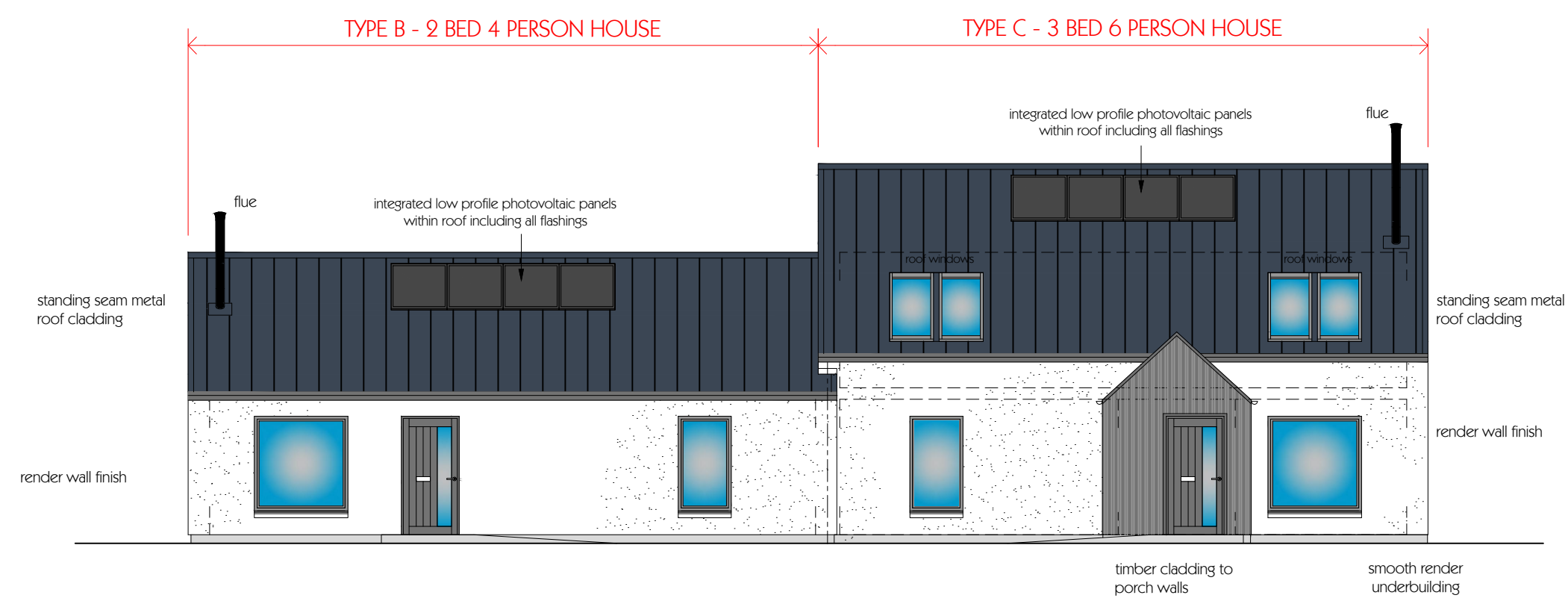
rear elevation



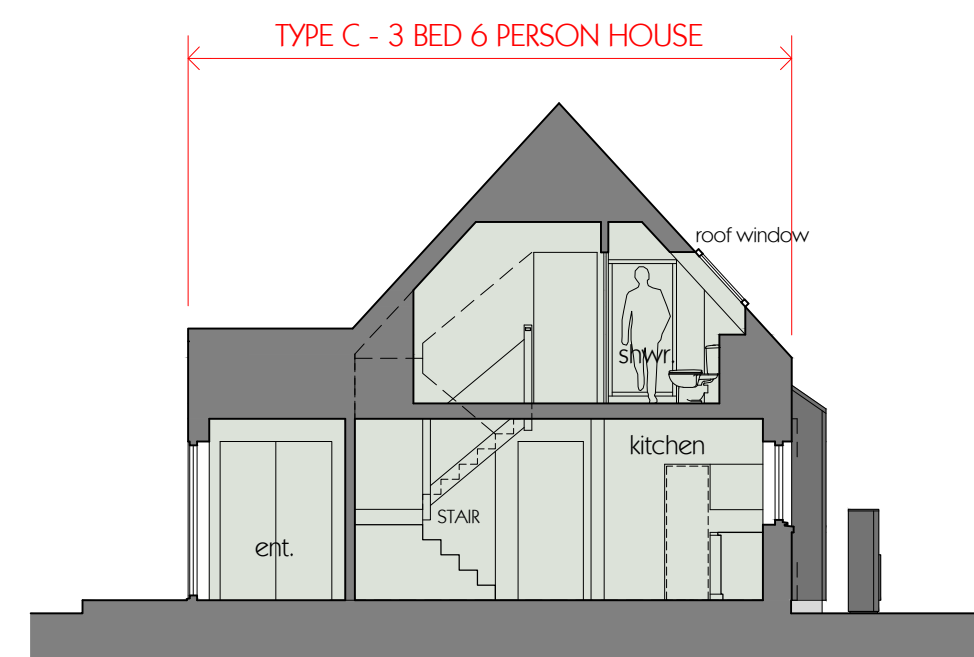
side elevation



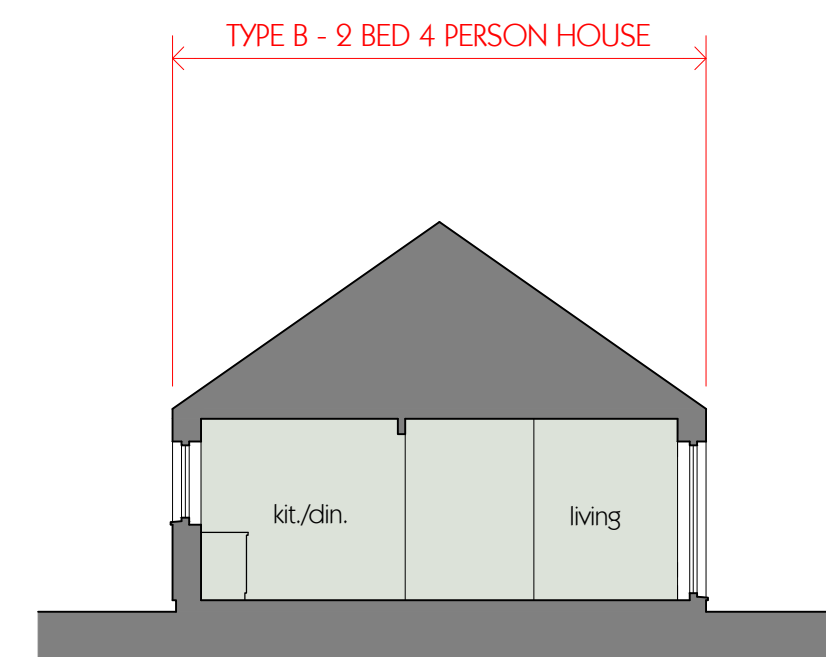
side elevation



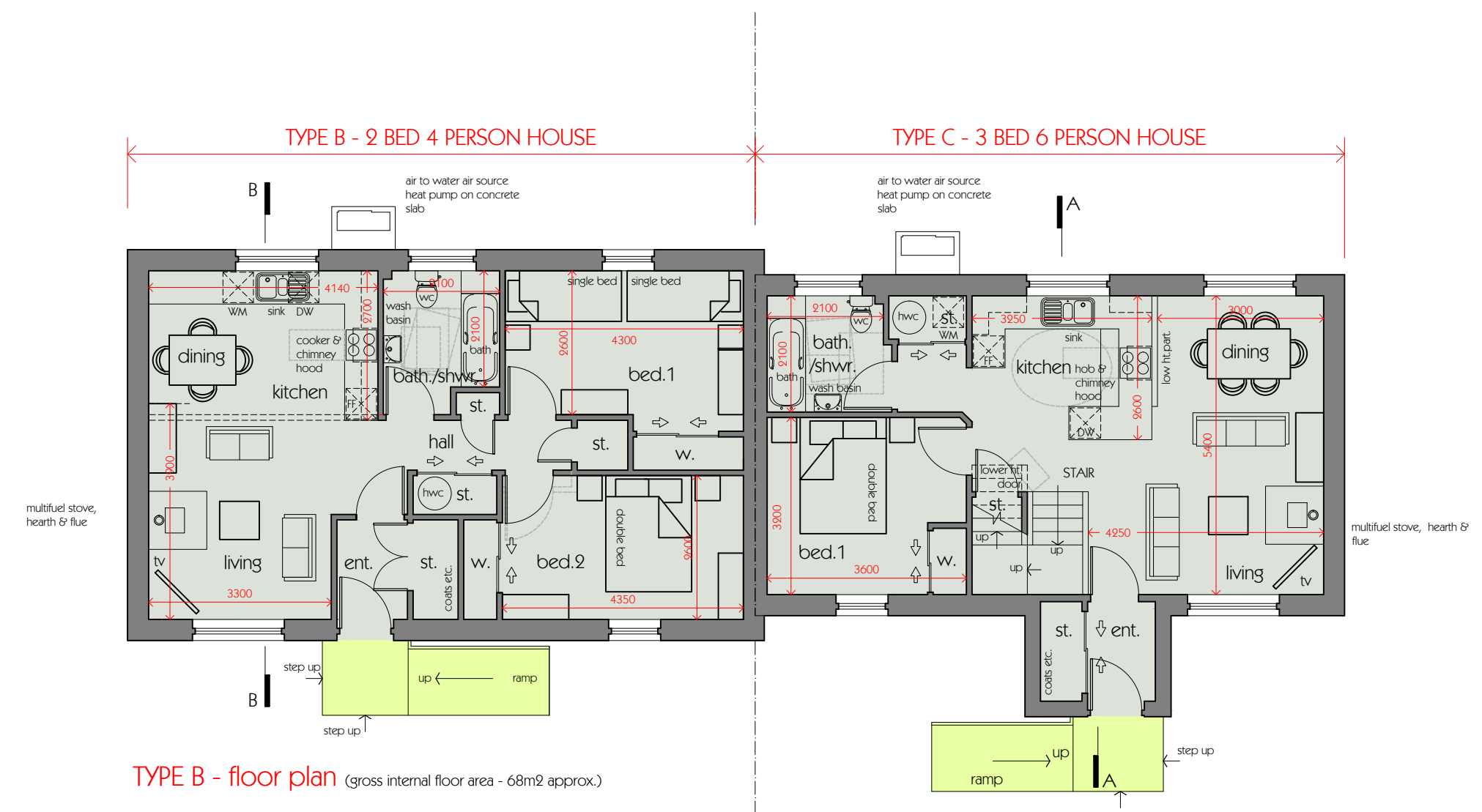
front elevation



section AA

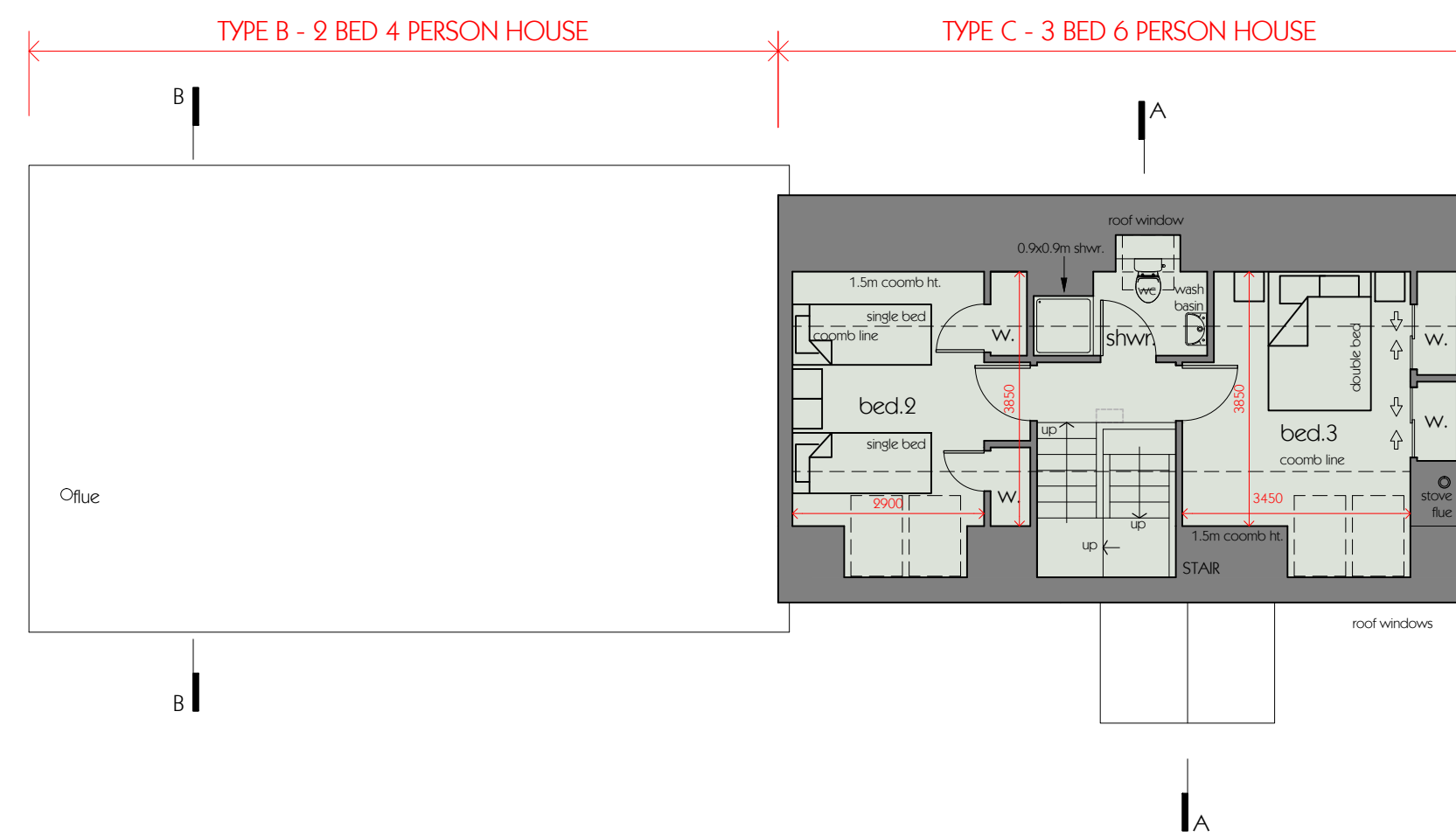


section BB



TYPE B - floor plan (gross internal floor area - 68m<sup>2</sup> approx.)

TYPE C - ground floor plan (gross internal floor area - 58m<sup>2</sup> approx.)



TYPE C - first floor plan (gross internal floor area excl. stairwell - 37.5m<sup>2</sup> approx.)

## TYPE B & C HOUSES

TYPE B - 2 BED 4 PERSON HOUSE - SEMI DETACHED  
TYPE C - 3 BED 6 PERSON HOUSE - SEMI DETACHED

Project  
PROPOSED HOUSING DEVELOPMENT AT  
SITE AT SCALASAIG, ISLE OF  
COLONSAY, ARGYLL

Drawing  
TYPE B & C HOUSES  
FLOOR PLANS, SECTIONS & ELEVATIONS  
SCHEME DESIGN

Drawn by EM Date: NOVEMBER 2020

Drawing Scale: A1 @ 1:100

CAD Filename:

Beaton + McMurchy  
architects

tigh na g'laic, taynuilt, argyll. pa35 1jw  
tel - 01866 892350 fax - 01866 892320  
e-mail mail@bmacarchitects.co.uk  
web www.bmacarchitects.co.uk

Drawing No. 2035 PB06 Revision